



# QUINTA DE CABANAS

DOURO COUNTRY HOUSE

-  10 ROOMS -



- A GUIDE WITH ALL THE INFORMATION YOU NEED -

# INTERACTIVE MENU

Click on the Icons 



ABOUT US



WHERE ARE WE



OTHER INDOOR AMENITIES



OTHER OUTDOOR AMENITIES



OTHER IMPORTANT INFORMATION

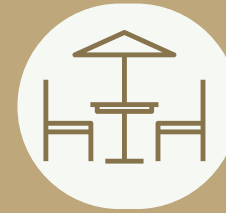


USEFUL INF.  
(ATM, Tourist Office, Pharmacies, Transfer)

## AVAILABLE AMENITIES



Classic Rooms



Family Room with Terrace



Suite with Bath and Terrace



Master Suite River View

## GUIDE TO USEFUL SERVICES



Markets



Restaurants



Butchers/ Fish Market



Farms/ Cellars, Winepresses



Bakeries/ Pastry Shops



Petrol Stations



ACTIVITIES AT THE FARM



LOCAL ACTIVITIES

## PLACES OF INTEREST



Cultural Heritage



Nature



Rivers



Mountains and Swings



Routes



Pedestrian Routes



OTHER MUST-SEE PLACES



EVENTS



FEEDBACK

# ABOUT US

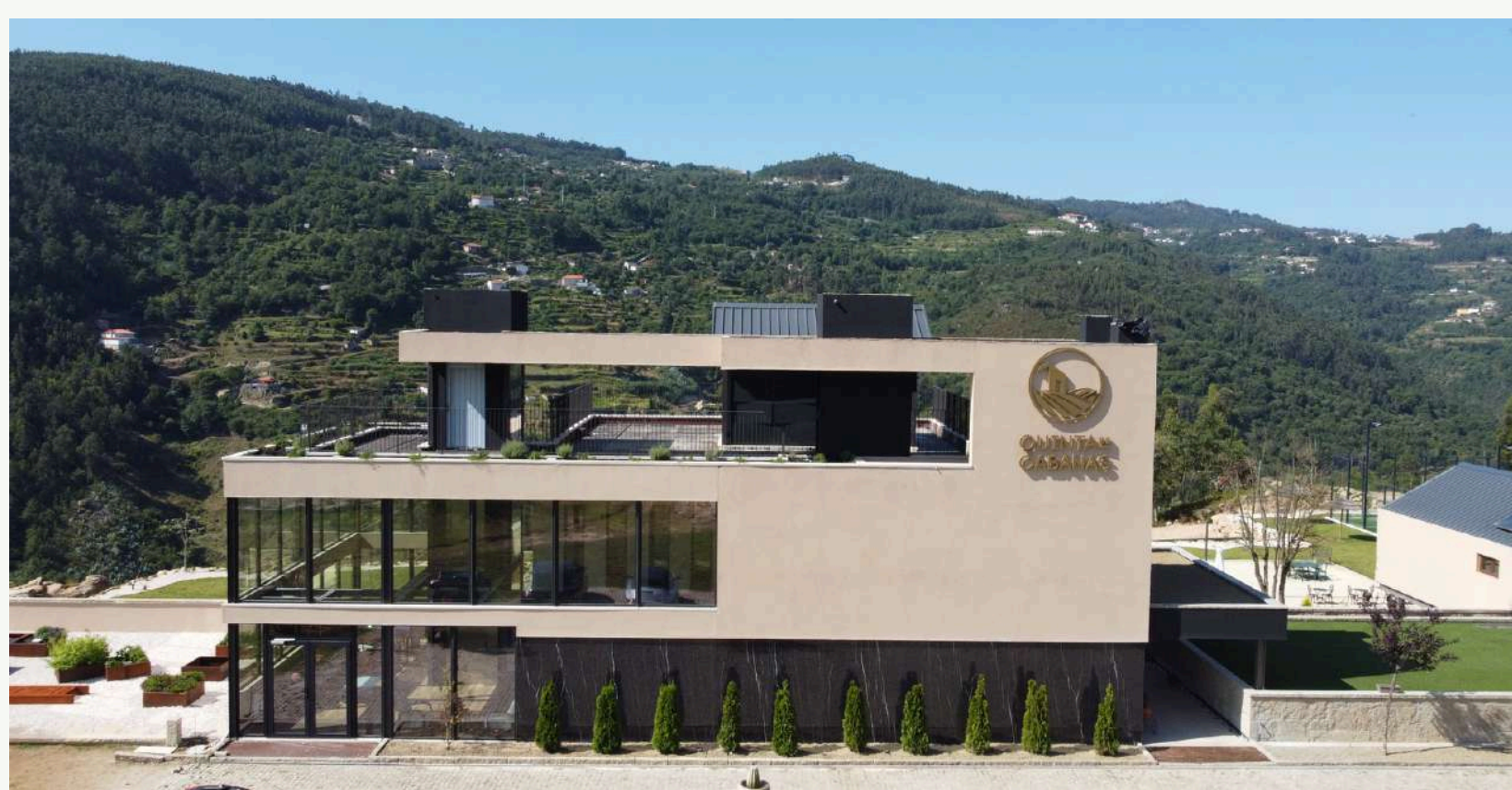


**QUINTA DE  
CABANAS**  
DOURO COUNTRY HOUSE

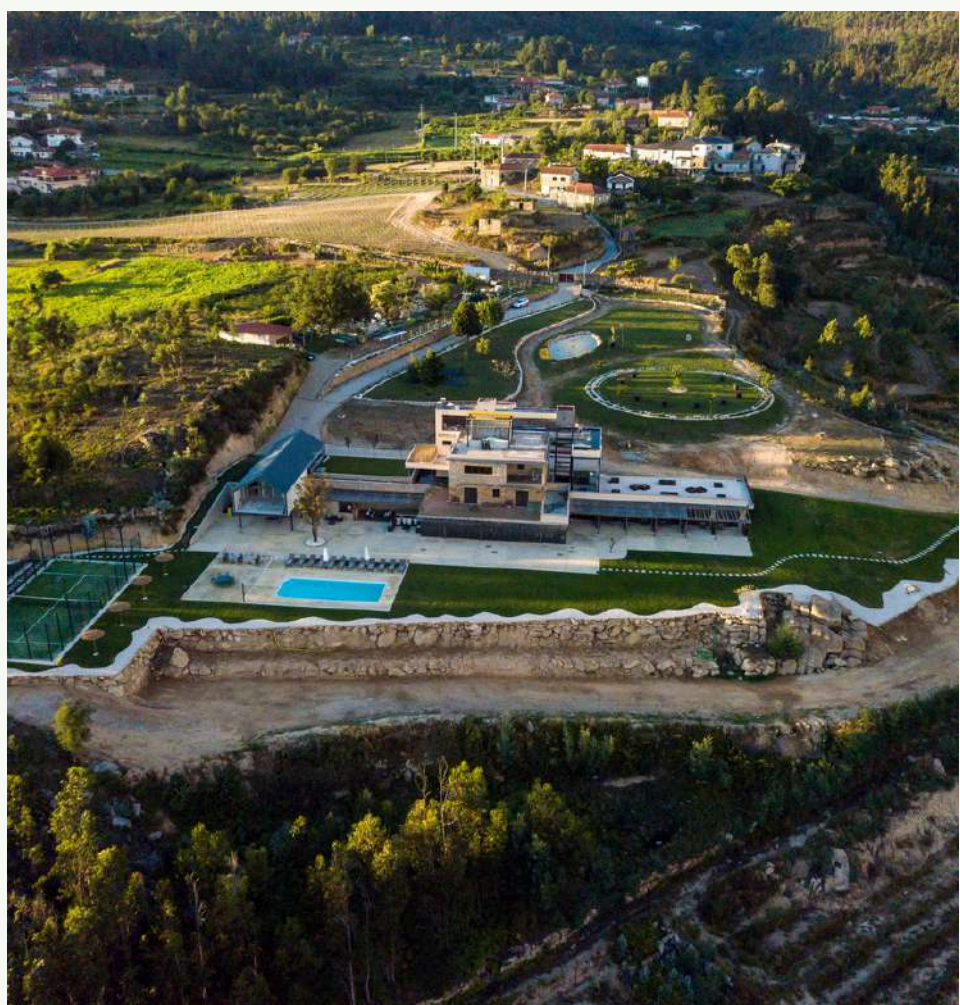
Quinta de Cabanas was created by the couple Rui and Elizabete. They wanted to give new life to an abandoned land, rebuilding a house in ruins and creating a Country House in the rural space.

They gave up their careers in IT to fully dedicate themselves to rural tourism and, after the positive feedback of their guests, they sought to acquire skills in Hotel Management. They decided to expand and adapt the building to be able to provide the characteristics of a 4★ Rural Hotel, also growing 4 hectares of vineyards with the aim of becoming an **excellent wine tourism destination in the Douro Verde region.**

Quinta de Cabanas Douro Country House aims to be a reference location for those who wish to explore the region, taste wine, enjoy the gastronomy, as well as celebrate weddings and special events in Portugal, in an idyllic setting surrounded by natural resources.



# WHERE ARE WE



Located in the heart of the stunning Douro Verde region, in **Marco de Canaveses**.

Surrounded by breathtaking landscapes and with panoramic views over the Douro River, astonishing vineyards and an atmosphere that exudes tranquility, Quinta de Cabanas is the perfect refuge for those who are looking for escaping the hustle and bustle of everyday life and connect with nature, the culture and history of this enchanting region.



## GPS Direct Location

Rua de Cabanas, n<sup>o</sup> 131

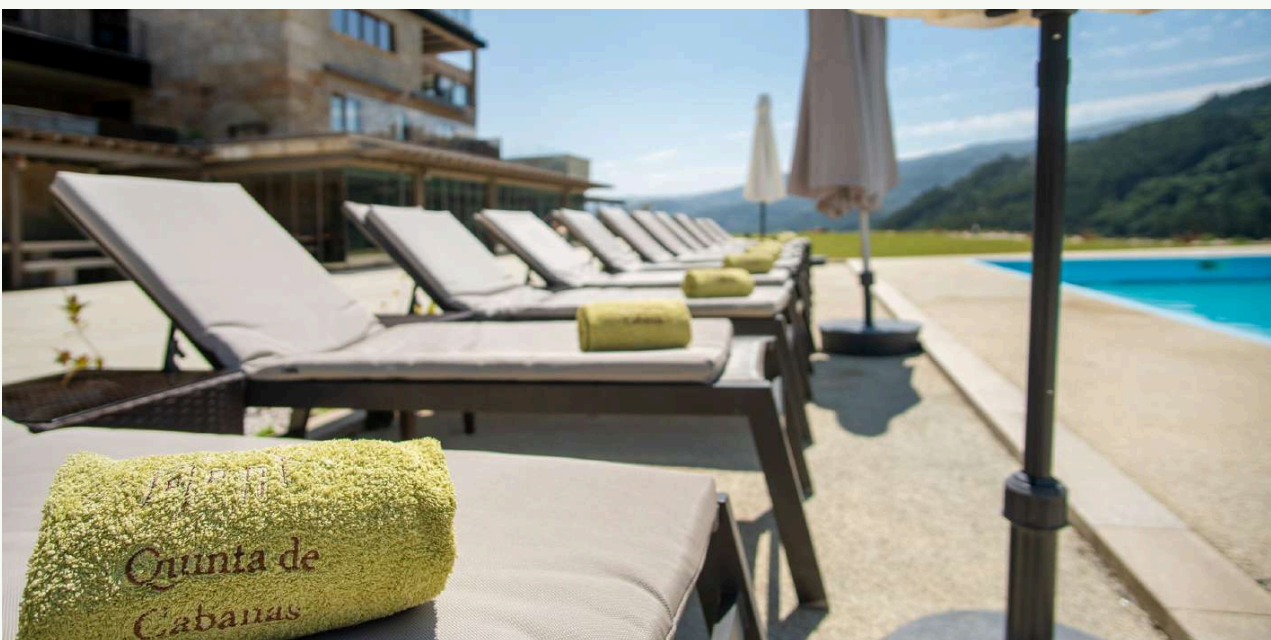
4625-320 | Penha Longa Marco de

Canaveses

Portugal




# AMENITIES IN OUR ACCOMMODATIONS



We want you to feel fully informed and without any doubts. We will show you everything that **Quinta de Cabanas - Douro Country House** offers and all you can enjoy.

## 7 CLASSIC ROOMS WITH TERRACE

 Capacity: 2 Adults + 1 Extra Bed



### BEDROOMS

- Queen size bed 1.6 meters wide or option of two single beds
- Terrace with side table, 2 chairs and 2 armchairs
- Bedding, pillows and blankets
- Wardrobe with hangers
- Desk and desk chair


### BATHROOMS

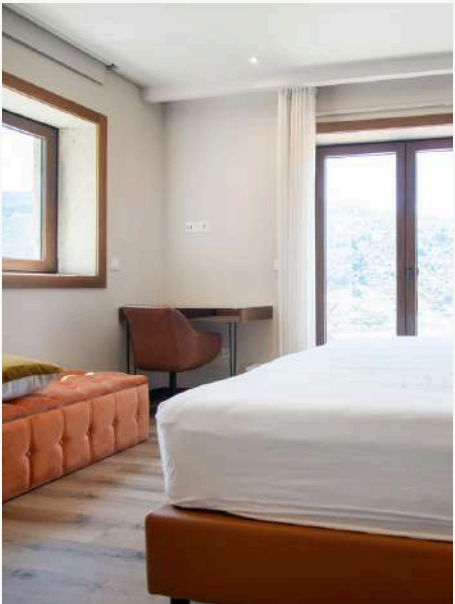
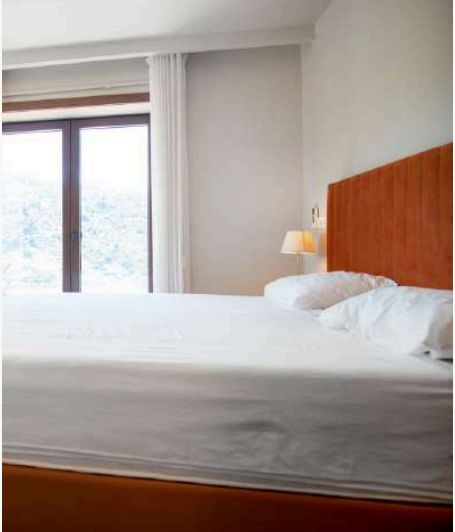
- Private bathroom in each room
- Bath and face towels
- Shampoo, conditioner, shower gel, liquid soap
- Body lotion
- Toilet paper
- Shower
- Hairdryer
- Heated towel rail

### OTHER AMENITIES

- WiFi
- SMART TV
- Inverter air conditioning with user control
- Mini bar

# 1 FAMILY ROOM WITH TERRACE

 Capacity: 3 Adults + 1 Extra Bed



## ROOM

- King size bed 1.8 meters wide or option of two single beds
- Single bed in additional room
- Terrace with side table, 2 chairs and 2 armchairs
- Bedding, pillows and blankets
- Wardrobe with hangers
- Desk and desk chair


## BATHROOM

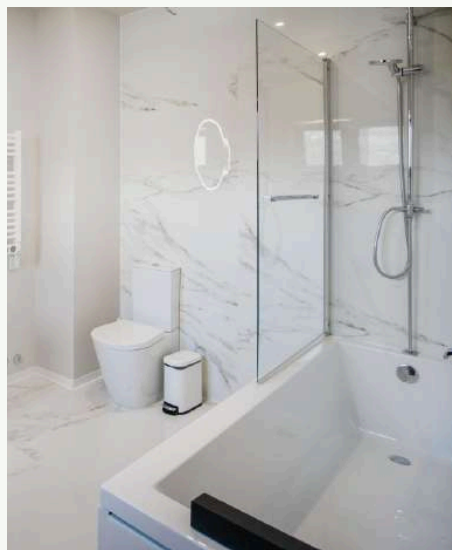
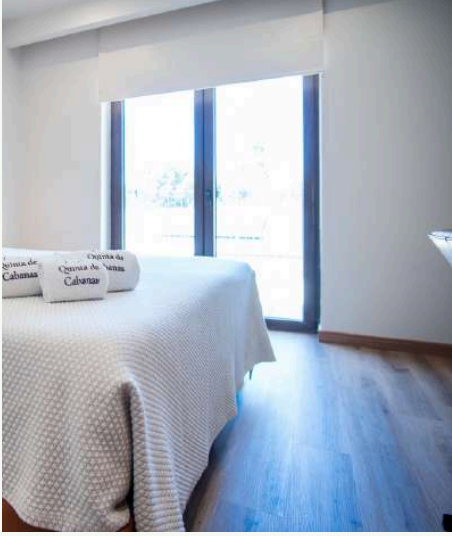
- Private bathroom in the room
- Bath and face towels
- Shampoo, conditioner, shower gel, liquid soap
- Body lotion
- Toilet paper
- Shower
- Hairdryer
- Heated towel rail

## OTHER AMENITIES

- WiFi
- SMART TV
- Inverter air conditioning with user control
- Mini bar

# 1 SUITE WITH BATHTUB AND TERRACE

 **Capacity: 2 Adults + 1 Extra Bed**



## ROOM

- Queen size bed 1.8 meters wide or option of two single beds
- Terrace with side table, 2 chairs and 2 armchairs
- Bedding, pillows and blankets
- Wardrobe with hangers
- Desk and desk chair


## BATHROOM

- Private bathroom in the room
- Bath and face towels
- Shampoo, conditioner, shower gel, liquid soap
- Body lotion
- Toilet paper
- Bathtub
- Hairdryer
- Heated towel rail

## OTHER AMENITIES

- WiFi
- SMART TV
- Inverter air conditioning with user control
- Mini bar

# 1 MASTER SUITE WITH RIVER VIEW

 **Capacity: 2 Adults + 1 Extra Bed**



## ROOM

- King size presidential bed 2 meters wide
- River, pool and mountain view
- Balcony with side table, 2 chairs and 2 armchairs
- Bedding, pillows and blankets
- Wardrobe with hangers
- Sofa bed and side tables
- Desk and desk chair

## BATHROOM

- Private bathroom in the room
- Bath and face towels
- Shampoo, conditioner, shower gel, liquid soap
- Body lotion
- Toilet paper
- Double whirlpool bathtub
- Shower
- Hairdryer
- Heated towel rail
- Air conditioning

## OTHER AMENITIES

- WiFi
- SMARTTV
- Inverter air conditioning with user control
- Mini bar

# OTHERS AMENITIES

## INSIDE



### HEALTH AND WELLNESS



- Steam room
- Turkish bath
- Heated indoor pool
- Hydromassage column
- Massage room
- Gym



### MEAL AREA



- Equipped kitchen
- Barbecue with wood oven
- Interior: Table with 24 seats
- Outside: Stone table with 16 seats + Iron table with 8 seats



### REDUCED MOBILITY



- Panoramic elevator prepared for reduced mobility
- Social bathrooms adapted for reduced mobility
- Changing room with adapted shower

# OTHERS AMENITIES

## INSIDE



### ENTERTAINMENT



- Living space
- WiFi
- Roulette game table
- Billiards
- Matrecos
- Ping pong
- Cards, chess, domino, checkers and board games
- Sofa room
- TV room
- Wine tasting room



### MEETING ROOM



- Tables and chairs for 32 seats
- Lecturer/Speaker desk
- WiFi
- 65" SMART TV
- Flipboard
- Air conditioning
- Coffee break



### CHILDREN

- Dining chair
- Outlet protectors
- Cradle
- Changing diapers

# OTHERS AMENITIES

## OUTSIDE

- Solar panels
- Parking for 46 cars
- Swimming pool: open all year round (heated in summer)
- Mountain and Douro river view
- Sunbeds
- Sofas
- Garden
- Umbrellas
- Padel field
- Children's park with swings and slide
- Social space
- Charger for electric vehicles
- Lake
- Vineyards
- Pedestrian routes



# IMPORTANT INFORMATION



**Network Name:** Quinta de Cabanas

**Password:** 12345678



**Check in:** from 4pm | **Check out:** until 11am



**Type of check in:** In person between 4pm and midnight with identification registration for all guests. It includes a guided tour of the property and the code for door openings;



We do not accept pets;



**Extra fees:** €45 per night for an extra bed;



**Cleaning:** Change of towels, sheets and general cleaning of all rooms every 3 nights



Daily garbage collection;



**SPA area (Indoor pool, sauna, turkish bath and showers)** available 24 hours, the water quality of both pools is checked daily;



**Laundry** available.

## CONTACTS:

*(You can click on it directly)*



[info@quintadecabanas.pt](mailto:info@quintadecabanas.pt)



[\(+351\) 960 466 363](tel:+351960466363) | Rui Gomes

# IMPORTANT INFORMATION



## CHEF AT HOME



### Breakfast

- Meals prepared in the property's kitchen
- **Buffet** service
- **Continental breakfast: homemade bread and pastries, cheeses and cold cuts, scrambled eggs, fresh fruit, healthy options (yoghurt, granola and regional sweets) and drinks**
- Served from **8:30 am to 10:30 am**
- Price: **€15.00 per adult | €10.00 per child\***
- Mandatory pre-booking up to 8 days **before** the check-in date
- Reservation required for the entire group



### Brunch

- Meals prepared in the property's kitchen
- Includes **juice station, full coffee bar, cold table and premium starters (breads, cakes, scones, yoghurts, granola, smoked salmon, sausages, cheeses and salads)**
- Served from **11:00 am to 1:00 pm**
- Price: **€27.50 per adult | €15.00 per child\***
- **Alcoholic beverages not included**
- Mandatory pre-booking up to 8 days **before** the check-in date
- Reservation required for the entire group



### Lunch or Dinner

- Meals prepared in the property's kitchen
- Includes **Bread, Soup, Two Salads, Two Main Courses to share, Two Sweet Desserts, and Seasonal Fruit**
- Price: **€35.00 per adult | €20.00 per child\*** (children's options with one main course available)
- **Drinks not included** in the meal price
- Mandatory pre-booking up to 8 days **before** the check-in date
- Reservation required for the entire group

*We have a wide range of options on our menu so that the group can choose at their leisure, thus facilitating consensus among everyone.*

*\*Children: 0-2 years old free | 3-11 years old child rate | +11 years old adult rate*

# USEFUL LINKS

**NEAREST ATM  
MACHINE**

[MAPS](#)

**TRANSFER**

[LINK](#)

**TOURIST  
OFFICE**

[MAPS](#)

**PHARMACIES**

[MAPS](#)

# GUIDE TO USEFUL SERVICES

Here, you will find the best places to explore in our surroundings. Click the Google Maps links next to our suggestions and find your way easily.



# MARKETS

Click directly on the links to find the location.



## MINU SUPERMARKET

[GOOGLE MAPS](#)

Grocery store in **Penha Longa** (2.5 km from the farm)



## COVIRAN

[GOOGLE MAPS](#)

Supermarket in **Sande**



## INTERMACHÉ

[GOOGLE MAPS](#)

Supermarket in **Marco de Canaveses**  
Home deliveries

**Open every day from 9:00 am to 9:00 pm**



## GARRAFEIRA SILVAS

[GOOGLE MAPS](#)

Wine shop in **Marco de Canaveses**  
**Closed on Sundays**

**Open from 9:00 a.m. to 1:00 p.m. and from 2:30 p.m. to 7:30 p.m./7:00 p.m. on Saturdays**

# FARMS/CELLARS AND WINEPRESSES

Click directly on the links to find the location.



## SAPATEIRO

[GOOGLE MAPS](#)

Visit to the winery and vineyards | Wine tasting | Wine sales



## CASA DE VILACETINHO

[GOOGLE MAPS](#)

Visit to the winery and vineyards | Testing room | Wine sales | Meals | Walking route – Vinho Verde Walk



## A&D WINES

[GOOGLE MAPS](#)

Guided tour of the farm | Many testing options | Meals



## 1000 CURVAS

[GOOGLE MAPS](#)

Guided Tour of the Vineyards and Winery | Wine Tasting | Gastronomic Experience | Wine Sales

# BUTCHERS FISH MARKET

Click directly on the links to find the location.



## COELHO

[GOOGLE MAPS](#)

Butcher shop in **Penha Longa** (2.5 km from the farm)



## O AROUQUÊS

[GOOGLE MAPS](#)

Butcher shop in **Penha Longa** (2.5 km from the farm)



## CONTINENTE

[GOOGLE MAPS](#)

Supermarket in **Marco de Canaveses**  
Open every day from 8:00 a.m. to 10:00 p.m.



## MERCADONA

[GOOGLE MAPS](#)

Supermarket in **Marco de Canaveses**  
Open every day from 9:00 am to 9:30 pm

# RESTAURANTS

Click directly on the links to find the location.



## QUINTA DA TELHEIRA

[GOOGLE MAPS](#)

Type of gastronomy: Traditional Portuguese Cuisine | Wine bar



## CANCELA VELHA

[GOOGLE MAPS](#)

Type of gastronomy: Traditional Portuguese Cuisine | Terrace



## 2 RIOS

[GOOGLE MAPS](#)

Type of gastronomy: Specialty in grilled steaks | Tapas | Grilled plates | Bar



## BODEGUITA DO BOM RETIRO

[GOOGLE MAPS](#)

Type of gastronomy: Traditional Portuguese Cuisine | Terrace



# BAKERY

Click directly on the links to find the location.



## INDUSTRIAL

[GOOGLE MAPS](#)

Pastry | Bakery with own manufacture



## A PADARIA

[GOOGLE MAPS](#)

Bakery | Pastry with own manufacture |  
Coffee shop



## CASA DOS LENTEIRÕES

[GOOGLE MAPS](#)

Regional confectionery with historical  
tradition since 1819



## MARCOENSE

[GOOGLE MAPS](#)

Bakery and pastry shop with own  
manufacture | Traditional sweets

# PETROL STATIONS

Click directly on the links to find the location.



## GALP

[GOOGLE MAPS](#)

Gas station in **Penha Longa**



## POSTO FREITAS

[GOOGLE MAPS](#)

Gas station in **Paços de Gaiolo**



## INTERMACHÉ

[GOOGLE MAPS](#)

Gas station in **Marco de Canaveses**



## GALP

[GOOGLE MAPS](#)

Gas station in **Alpendurada**

# PLACES OF INTEREST



# 📍 Marco de Canaveses



## SANTA MARIA CHURCH

📍 [MAPS](#)

📺 [VIDEO](#)

Designed by the renowned Portuguese architect Álvaro Siza Vieira, this church is an example of 20th century religious architecture, with simplicity and elegance. It is an important tourist attraction due to its unique architectural beauty.



## SANTA MARIA DE SOBRETÂMEGA CHURCH

📍 [MAPS](#)

📺 [VIDEO](#)

The Church of Sobretâmega, founded after 1320, is located on the riverside of the Tâmega river, close to the old Canaveses bridge. It presents similarities with the Church of São Nicolau de Canaveses on the opposite riverside. The absence of columns and capitals in its portals indicates a late construction.



## SENHORA DA LIVRAÇÃO DE FANDINHÃES CHURCH

📍 [MAPS](#)

📺 [VIDEO](#)

Located in the north of the town of Fandinhães, in Paços de Gaiolo. The Fandinhães Chapel is dedicated to “Nossa Senhora da Livração”, a sacred figure. It is a medieval temple built in 1258. The original structure, with Romanesque influences, is represented by the rectangular main chapel, while the main portal and facade replace the old wall at the top of the nave.



# Marco de Canaveses



## EMERGENTE - CULTURAL CENTER

 [MAPS](#)
 [VIDEO](#)

Emergente plays a central role in the cultural life of the region. This building is both the cultural center and the Poeta Joaquim Monteiro Municipal Library. A visit to Emergente offers the opportunity to explore temporary exhibitions, watch shows and enjoy a contemporary and peaceful environment for reading.



## ALDEIA DE CANAVESSES

 [MAPS](#)

In Marco de Canaveses, there are two villages participating in the "Aldeias de Portugal" program, where you can experience rurality and natural and architectural heritage. The village of Canaveses is located on the riverside of the Tâmega river, divided between the parishes of Sobretâmega and São Nicolau.



## TONGOBRIGA

 [MAPS](#)
 [VIDEO](#)

It was an ancient Roman city dating back to the period of the Roman Empire. Archaeological excavations revealed traces of buildings, baths, an amphitheater, walls and other architectural elements that prove the Roman presence in the region.



# Marco de Canaveses



## CARMEN MIRANDA MUSEUM

 [MAPS](#)

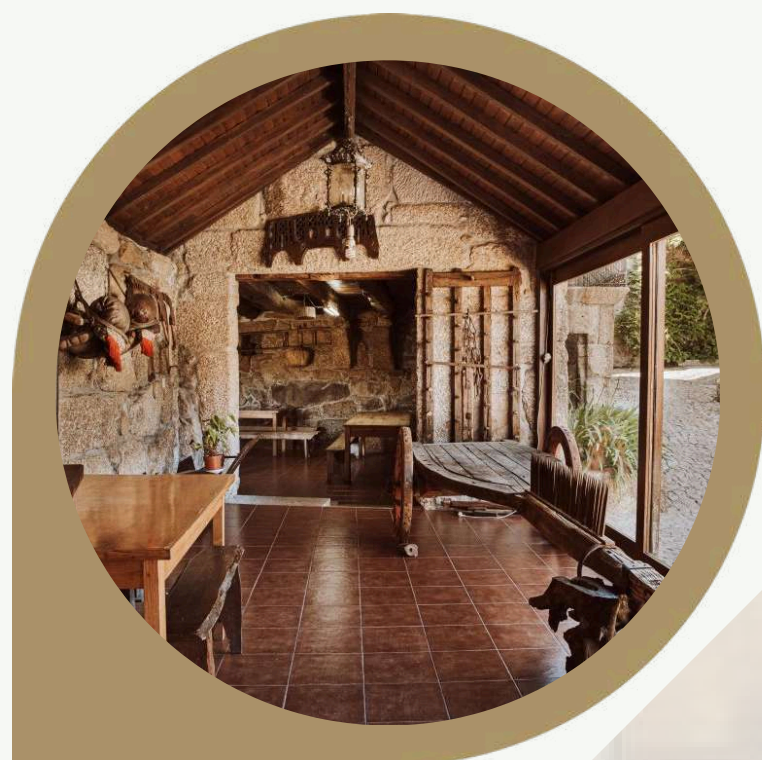
Opened on August 5, 2022 after renovation and expansion works. At the Carmen Miranda Museum, we can learn about the life and work of “Pequena Notável” with the “Antestreia” exhibition.



## STONE MUSEUM

 [MAPS](#)

It is a municipal museum and it is located in Alpendorada, close to the stone extraction, transformation and commercialization industries. It is located in a beautiful building, which used to be a school during Estado Novo. In this building, the stone is in a living dialogue: through the long-standing relationship with the man; as an instrument of arts and as the basis of local wealth.



## LINEN AND WINE MUSEUM (HOUSE OF POPULAR CULTURE OF MAURELES)

 [MAPS](#)

The Linen and Wine Museum, also known as the “Casa da Cultura Popular de Maureles” (House of Popular Culture of Maureles), is inspired by the origins and traditions of the people. It integrates two areas: one dedicated to wine culture and the other to linen. Here you can see that, besides being an area dedicated to wine culture, it is also one of the most complete museum spaces focused on the linen that exist in our country.

 Marco de Canaveses**CITY LEISURE PARK**

It is a public park located in the heart of the city of Marco de Canaveses. Easily accessible and in a cool area, it provides good moments of relaxation and leisure. Located in the greenest areas of the city, it is suitable for itineraries, walks and sport activities.

**TÂMEGA RIVER PARK**

Enriched by a rare scenic and patrimonial beauty that includes the Canaveses bridge, the park has a picnic area, a pedestrian and maintenance circuit, a children's playground, a river and fishing platforms.

**MONTEDEIRAS PICNIC PARK**

Located in Sande, in the middle of the Montedeiras mountains. With an area of approximately 2,400 hectares, it is in harmony with nature. It is an excellent natural space for family and friends gatherings.

**ALPENDURADA E MATOS LEISURE PARK**

It is a public park, equipped with several features for the enjoyment of the population and visitors. Its large area, next to the Tâmega river, makes it a suitable space for pleasant picnics, walks and sport activities.

 Marco de Canaveses

### VÁRZEA E ALVIADA LEISURE PARK

 [MAPS](#)

The Park is located in Várzea, and it is an excellent natural space adapted for the enjoyment of holidaymakers looking for this idyllic space. Here, you can enjoy a large natural space, a beautiful waterfall and a walking trail along the riverside.



### BITETOS RIVER BEACH

 [MAPS](#)

The Bitetos river beach, on the riverside of the Douro river, was an old stopping point for the boats transporting Port Wine. Today it is a leisure place with activities such as canoeing and stand up paddle boarding. It has accessible facilities. It has lifeguards during the bathing season and the beach offers parking, toilets, a bar and waste recycling.



### TORRÃO PIER

 [MAPS](#)

The Torrão leisure area is located next to the Douro river, with a fantastic natural setting, between the riverside of the Tâmega and Douro rivers. It is where you can enjoy a magnificent surrounding landscape. Consisting of a small pier and a platform over the water, as well as support structures with a restaurant, a terrace and a swimming pool.

# Marco de Canaveses

## RIOS



### DOURO RIVER

The Douro river, south of Marco de Canaveses, was an important transport route and currently attracts tourists with its stunning landscapes and leisure facilities such as Bitetos beach. The construction of the Carrapatelo dam allowed the generation of hydroelectric energy and made the river navigable throughout the year, boosting river tourism in the region.



### TÂMEGA RIVER


The Tâmega River is a tributary of the Douro, in the municipality of Marco de Canaveses. It became navigable after the construction of the Torrão dam in 1989, allowing the practice of water sports and creating a new river landscape in the region.



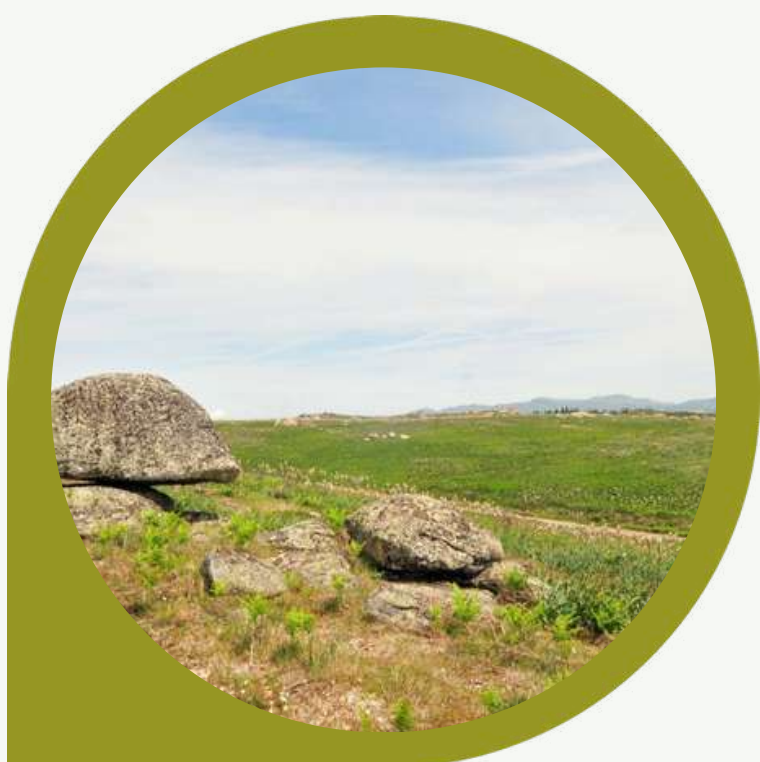
### OVELHA RIVER

 [MAPS](#)


The Ovelha river rises in Marão mountains and flows into the Tâmega river. It forms a valley of great beauty, with clear, fresh waters, inhabited by otters, trout and kingfishers. Although it has a low flow rate, the river has supplied several water mills in the past. Today, it is an ideal place for refreshing dives, observing fauna and flora in their natural state, sport fishing and enjoying amazing views.

 Marco de Canaveses**MOUNTAINS****MONTEDEIRAS MOUNTAINS**


Located in the parish of Sande and São Lourenço, it is the only mountain range entirely within the municipal limits. This region is rich in biodiversity and offers great opportunities for hiking and mountain biking. It houses the recently renovated Montedeiras Picnic Park, which is one of the main picnic and leisure spots in the municipality.

**ABOBOREIRA MOUNTAINS**

It integrates the municipalities of Amarante, Baião and Marco de Canaveses. With altitudes exceeding 700m, Aboboreira offers stunning landscapes and authentic archaeological and biodiversity discoveries. For any lover of nature tourism, the landscape of Aboboreira mountains is reason enough for a careful visit.

**SWINGS****SOALHÃES SWING**

Situated in the slope of Aboboreira mountains, with a privileged view of the region.

**NOSSA SENHORA DA LUZ SWING**

Located in Magrelos, Bem Viver, it has a magnificent view over the Douro river.



# Marco de Canaveses



## ROUTES



### ROMANIC ROUTE

[VIDEO](#)[APP](#)

It is a tourist and cultural project that encompasses 58 monuments and two interpretation centers, highlighting the Romanesque architectural style that flourished between the 11th and 14th centuries. The route aims to promote the region's historical and cultural heritage by uniting several cities, including Marco de Canaveses, and offers tourists the opportunity to explore notable churches and monuments that represent the area's rich Romanesque legacy.



### ROASTED LAMB WITH OVEN RICE ROUTE

[VIDEO](#)

This Route invites visitors to experience the region's culinary tradition, highlighting roasted lamb in a wood-fired oven, a traditional dish. The route offers the chance to taste this authentic dish, preserving traditions and quality, in a welcoming environment that reflects the local gastronomic culture. Find out more and discover participating restaurants [HERE](#).



### VINHO VERDE ROUTE

This route invites tourists to explore the unique wines of the region, which is part of the Vinho Verde Demarcated Region. The route offers visits to production sites, allowing visitors to appreciate the region's wine quality and rich winemaking heritage, which is appreciated around the world.

 Marco de CanavesesWALKING  
ROUTES

-  **PR1 - MCN** | "PEDRAS, MOINHOS E AROMAS DR SANTIAGO"  
 **FLYER** 
-  **PR2 - MCN** | "DOIS RIOS, DOIS MOSTEIROS"  **FLYER** 
-  **PR3 - MCN** | "CAMINHO DO RIO"  **FLYER** 
-  **PR4 - MCN** | "TRILHOS DOS ÓLMENS"  **FLYER** 
-  **PR5 - MCN** | "CAMINHOS DE CANAVEZES"  **FLYER** 
-  **PR6 - MCN** | "CAMINHOS DE TONGOBRIGA"  **FLYER** 
-  **PR7 - MCN** | "ALDEIAS E MARGENS DO RIO OVELHA"  
 **FLYER** 
-  **PR8 - MCN** | "TRILHOS PORTO CARREIRO"  **FLYER** 
-  **PR9 - MCN** | "CAMINHOS DO ZÉ DO TELHADO"  
(Nearest to the farm)  **FLYER** 



# Other Places to Visit



## AROUCA



### PAIVA WALKWAYS



Along the left riverside of the Paiva river, these multiple World Travel Awards Winner walkways allow us to explore unique and unforgettable sceneries. They are 8km extending from the river beaches of Areinho and Espiunca, lying between them, the Vau beach. It is a demanding journey, but visitors can count on support facilities along the way.



### SUSPENSION BRIDGE



This is one of the longest pedestrian suspension bridges in the world and its crossing is a unique and unforgettable experience. 516 meters long and 175m above the Paiva river, this engineering wonder grants a different perspective on the experience of the magnificent landscape. It is, without a doubt, the biggest attraction in Arouca, currently.



### DRAVE - THE MAGIC VILLAGE



Surrounded by mountains and isolated from the world, this is considered a magical village lost in time and space and accessible only on foot. In an amazing scenery filled with silence and where time seems to have stop, this abandoned village is located between the Freita, Arada and São Macário mountains. The creek known as Ribeira de Palhais runs through the village, completing the stunning view which invites to an ambience of profound retreat and meditation.



# Other Places to Visit

 **DOURO****RÉGUA**  [MAPS](#)

Peso da Régua is a city on the Vila Real county, located near the Douro river and is considered the capital of the region denoted for the production of the world known Port Wine. Therefore, if you wish to visit Régua and the Douro vineyards, your best options will be Régua and Pinhão (you can also opt for a river cruise between the two locations).

**PINHÃO**  [MAPS](#)

The beautiful town of Pinhão stands on the right riverside of the Douro river, at the heart of the Alto Douro vineyards where you may find some of the most wellknown Port Wine producing properties. The name of the town is due to its location on the mouth of the Pinhão river, one of Douro's confluents. Nestled between the two rivers, and standing on the slopes above the Douro, Pinhão takes part in the beautiful landscape sprinkled with farms and manor houses, a unique beauty of the Alto Douro vineyards area.

**“QUINTA DA PACHECA”**  [MAPS](#)

Come visit one of the most notorious vineyards of the Douro region. “Quinta da Pacheca” is located in Lamego, where you can experience a sensory and educational combination of aromas and traditional flavours of Douro. Find out more [here](#).

# Cultural Programme

There is always something good happening at **Marco de Canaveses**. Between cultural events, popular festivals, festivals and sport competitions, a vast program waits for you.

Choose what you want to watch or what you want to participate in and get into the spirit. In addition to the calendar of events available and constantly updated, find out here which are the regular annual events that mark the agenda each month in the region.

Click on the link and follow all the events you cannot miss!

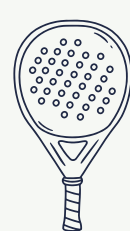
[EVENTS IN MARCO DE CANAVESES](#)



# ACTIVITIES ON THE FARM

**Quinta de Cabanas** offers a wide variety of activities for guests to enjoy during their stay.

Check out the available activities below:



## PADEL

An exciting sport that combines elements of tennis and squash, being played in a smaller, enclosed court.



## MASSAGES

Relaxation, sports or therapeutic massage sessions, offering an indulgent and rejuvenating refuge.



## WINE TASTINGS

Embark on a sensorial journey through the exquisite flavors and aromas of the world of wines from the regions of Portugal.



## HIKING

Pedestrian circuit from the Douro river to the Carrapatelo dam - PR9.



## YOGA CLASSES

Explore graceful poses, mindful breathing, and relaxing meditation.



## PAINTING CLASSES

Pieces of art created in painting classes for both adults and children.

For more information, contact us:

 [info@quintadecabanas.pt](mailto:info@quintadecabanas.pt)

 [\(+351\) 960 466 363](tel:+351960466363) | Rui Gomes

# WEDDINGS ON THE FARM

At Quinta de Cabanas, we believe that the perfect wedding begins long before the big day. That's why we offer a complete and personalised experience — from the exclusive Quinta venue and our own catering service to a network of carefully selected partners and the ability to adapt to different cultures and traditions.

Our proposal includes four unforgettable days:

**01. Welcome Dinner** — a gastronomic welcome that serenely awaits your arrival, far from the pace imposed by clocks. Put down your bags, make yourselves at home, and gather at the table only when the moment is perfect.

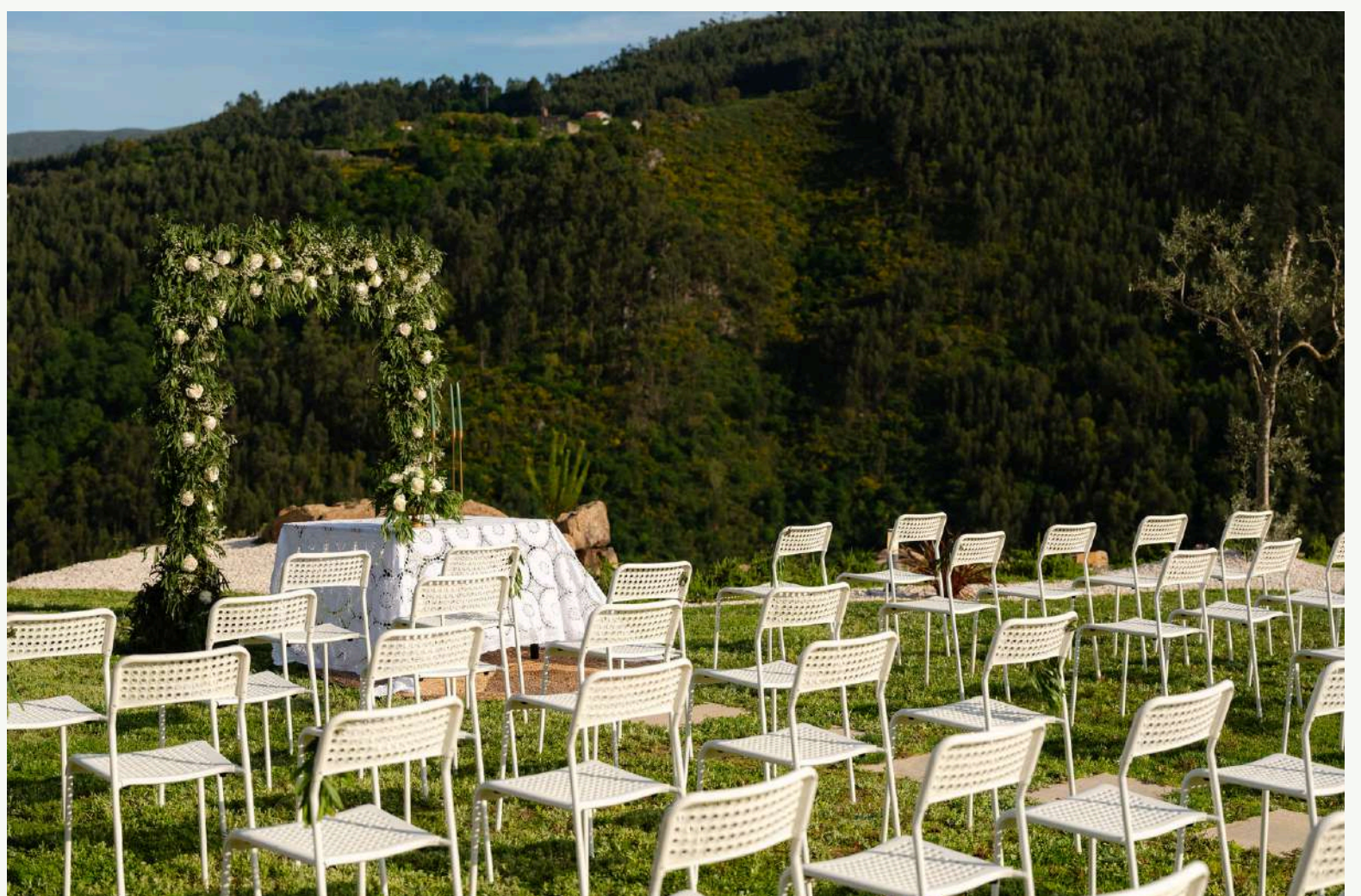
**02. Ceremony & Celebration** - the day you have always dreamed of, with exclusive catering and every detail taken care of by our team.

**03. Brunch & Sunset Party** - a relaxed brunch to prolong the magic, with a Sunset Event to crown the celebration.

**04. Day Off** - complete rest, start the day with the comfort of a full breakfast so you can wake up without rushing.

For religious weddings, the Parish Church is just a few steps away. The civil ceremony can also be held here, at the Quinta itself.

‘Where every detail  
tells a love story.’



# ACTIVITIES LOCATIONS

You can also choose from several activities available by local companies:



## BITETOS DOURO [SITE](#)

Bitetos Douro promotes recreational and leisure activities along the Douro, Paiva and Tâmega rivers, such as boat trips (Pontoon Boat), pedal boat trips and kayaking, and, for adrenaline lovers, they offer various activities such as: pedal boating, kayak, water ski, wakeboard, banana boat, etc.



## BAMBUTI DOURO [SITE](#)

Bambuti Douro provides tourist experiences, offering **personalised tours** that combine wine tastings, private boat trips, horse riding and visits to local vineyards and farms, with transport included and a focus on the authenticity of the region and the hospitality of the guides.



## ENJOY DOURO [SITE](#)

Enjoy Douro is a company dedicated to sports in nature, mainly stand up paddle on the Douro river and its tributaries, such as Tâmega and Paiva. It organizes guided tours lasting approximately 3 hours, which can range from 2 to 20 people.



## BELLO'GIRO [SITE](#)

Tourist entertainment company that promotes various activities in the Douro. Using Segway and Buggy, it takes tourists to discover the most emblematic places in the region.



## DELTATUR [SITE](#)

Deltatur benefits from natural characteristics for the practice of extreme and nautical activities, on the Paiva, Douro, Bestança, Tâmega and Cabrum rivers: rafting, canoeing, canyoning, jet skiing among other sports in communion with nature.



## STAY TO TALK [SITE](#)

Stay To Talk is a community-based cultural project, which aims to come into direct contact with natural and cultural heritage, landscapes and stories. Sensory challenges are launched to get to know the authenticity of the region.

# Additional Rules

Smoking is not permitted indoors.

Pets are not permitted.

Responsible use of spaces and resources is required.

The farm is a haven of tranquility—excessive noise is not permitted after 11 p.m. To extend the hours until 2 a.m., it is necessary to request a special noise permit from the authorities in advance, which costs €40. We handle the process 10 days in advance.

The property is always rented on an exclusive basis.

The base price is valid for up to 20 people in 10 rooms.

# Additional Rules

In 9 of the 10 rooms, you can choose between 1 double bed or 2 single beds. When booking, please inform us of your preferred configuration.

It is possible to add up to 12 extra beds (total: 32 people) for an additional cost of €45/night per bed.

10

We provide cots and high chairs on request, free of charge.

For guests not included in the reservation and who do not stay overnight, an additional fee of €15/person/day applies (minimum: €500).

The entry of external visitors (including service providers of any kind) must be communicated in advance and authorized by management.

Every morning, our team collects the trash and checks the water quality of the indoor and outdoor pools.

# WHAT YOU SAY ABOUT US IS IMPORTANT



We would love it if you could leave us a review on the booking platform you used.

Your experience is our greatest reward.

If you wish, please share also on Google your

## Opinion



*thank you so much for your stay*

We look forward to seeing you again

